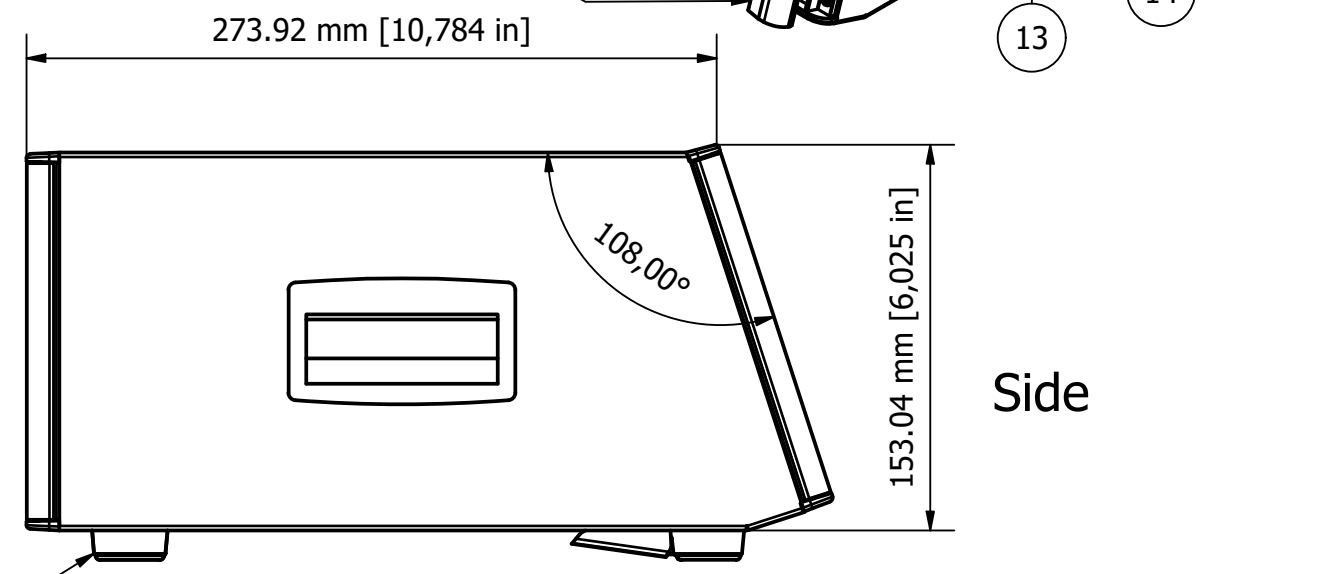
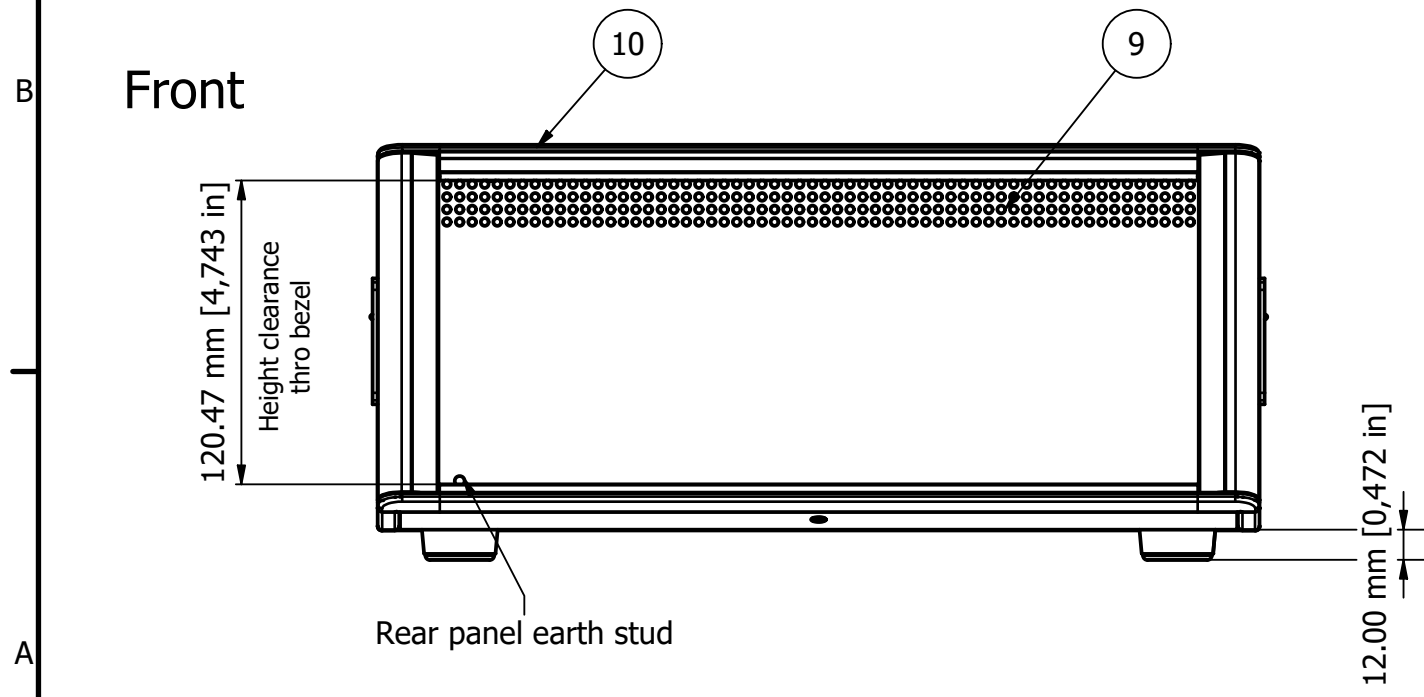
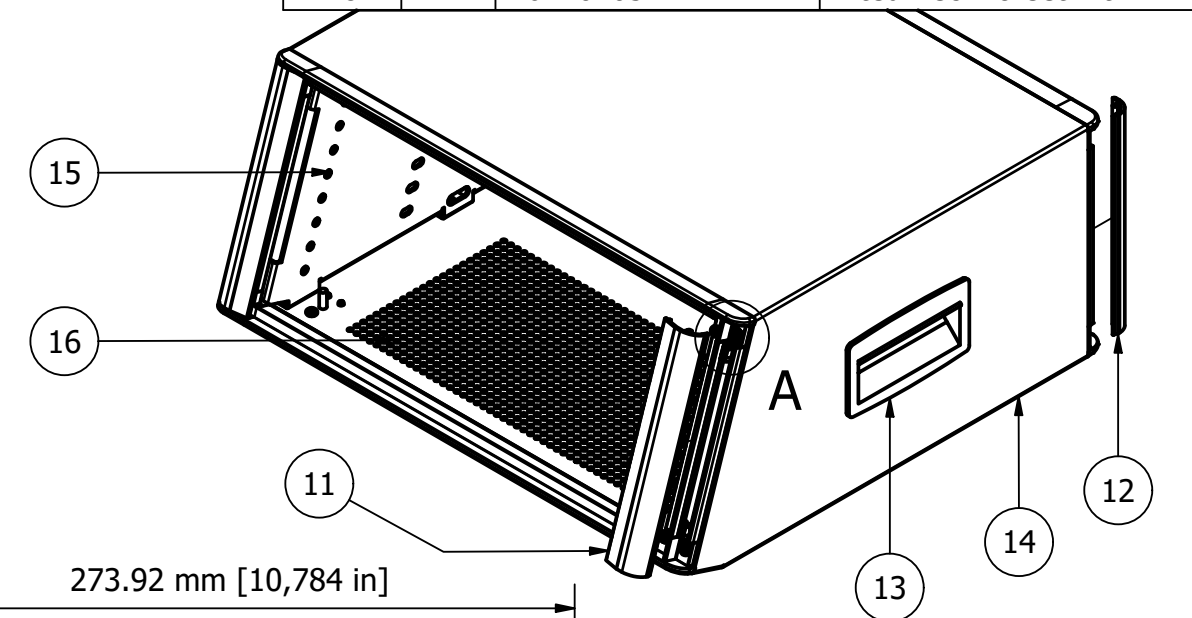


PARTS LIST			
ITEM	QTY	PART NUMBER	DESCRIPTION
1	8	M3x8mm Pan Screw	Front/Rear Panel Screws
2	8	M4x16mm CSK Screw	Bezel Screws
3	8	M3x6mm CSK Screw	Base Panel Screws
4	8	M6420000	Clips for Trims
9	1	M6403485	Rear Panel
10	2	M6401085	Bezel
11	2	M6400057	Front Trim
12	2	M6400077	Rear Trim
13	2	M64000040	Side Grip Handles
14	1	M6402032	Wrap Around Cover
15	1	M6403035	LH Chassis Plate
16	1	M6403122	Base Panel
17	1	M6403036	RH Chassis Plate
18	2	M6420205	Tilted Technofeet Kit



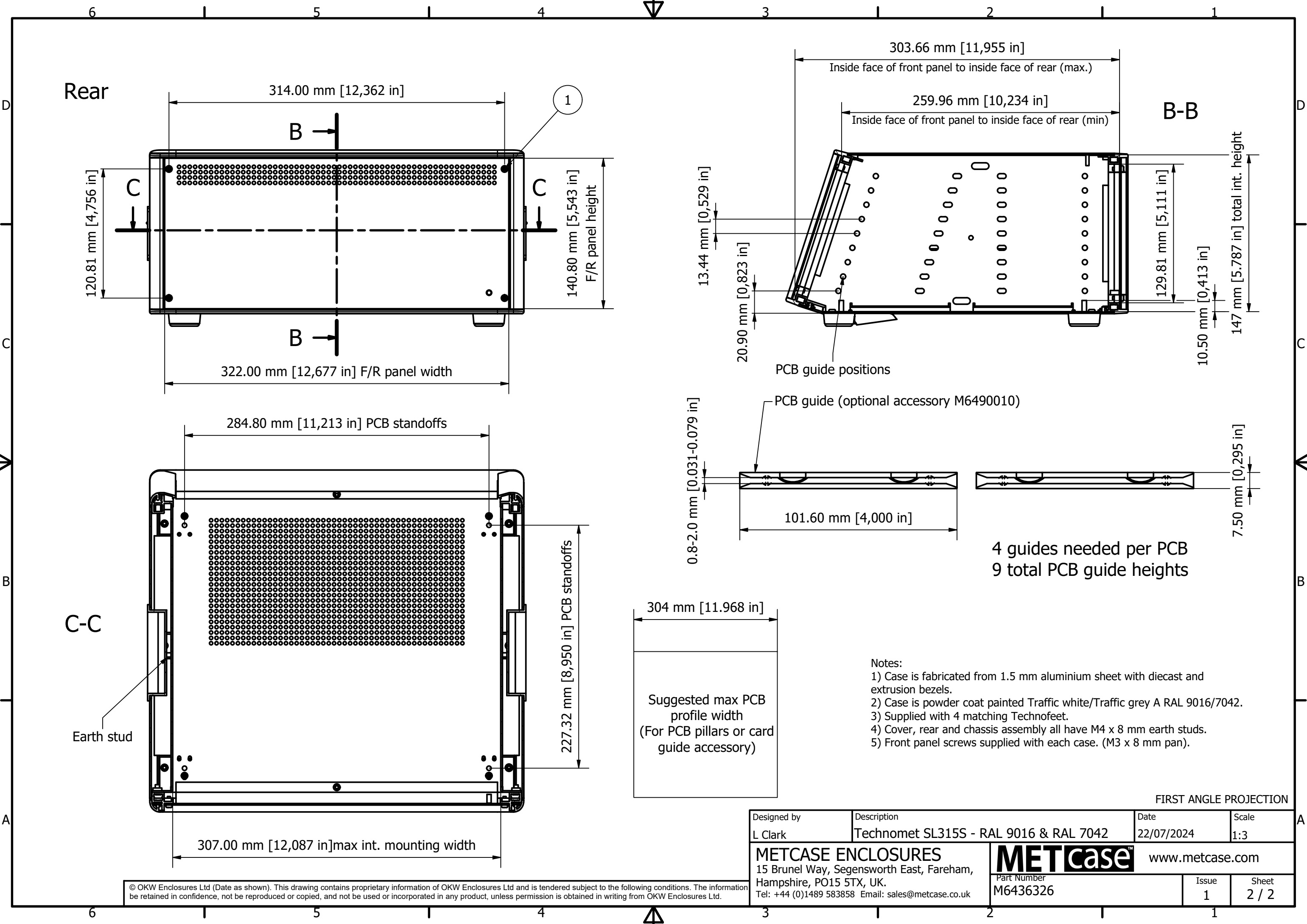
Front panel (M6400707) sold seperately

FIRST ANGLE PROJECTION

Designed by L Clark	Description Technomet SL315S - RAL 9016 & RAL 7042	Date 22/07/2024	Scale 1:3
------------------------	---	--------------------	--------------

METCASE ENCLOSURES 15 Brunel Way, Segensworth East, Fareham, Hampshire, PO15 5TX, UK. Tel: +44 (0)1489 583858 Email: sales@metcase.co.uk		METcase™ www.metcase.com Part Number M6436326	Issue 1	Sheet 1 / 2
--	--	--	-------------------	-----------------------

© OKW Enclosures Ltd (Date as shown). This drawing contains proprietary information of OKW Enclosures Ltd and is tendered subject to the following conditions. The information be retained in confidence, not be reproduced or copied, and not be used or incorporated in any product, unless permission is obtained in writing from OKW Enclosures Ltd.



© OKW Enclosures Ltd (Date as shown). This drawing contains proprietary information of OKW Enclosures Ltd and is tendered subject to the following conditions. The information be retained in confidence, not be reproduced or copied, and not be used or incorporated in any product, unless permission is obtained in writing from OKW Enclosures Ltd.

Designed by L Clark	Description Technomet SL315S - RAL 9016 & RAL 7042	Date 22/07/2024	Scale 1:3
METCASE ENCLOSURES 15 Brunel Way, Segensworth East, Fareham, Hampshire, PO15 5TX, UK. Tel: +44 (0)1489 583858 Email: sales@metcase.co.uk		METcase™ www.metcase.com Part Number M6436326	
		Issue 1	Sheet 2 / 2

FIRST ANGLE PROJECTION