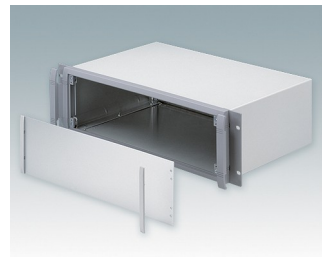
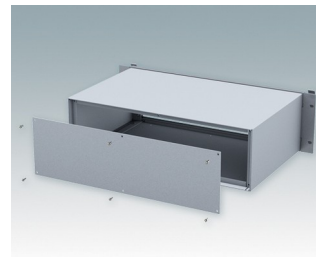
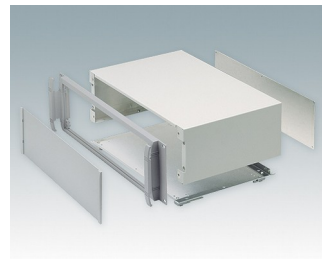
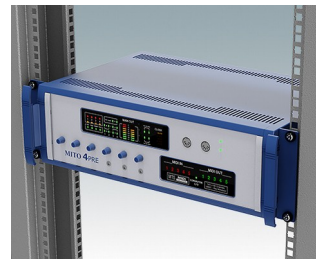


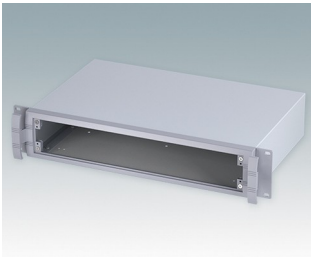
## Modern 19" rack mount enclosures to DIN 41494 and IEC 60297-3

- Stylish range of 19" rack cases in aluminium
- Heights: 2U & 3U in two standard depths
- Attractive diecast front bezel incorporating unique 'comfort-handles' and rack mounting ears
- Robust folded case body with removable base
- Removable rear panel
- Front panel (accessory) recessed in bezel for location of membrane keypads
- Mounting holes in base for PCBs
- Moulded feet (accessories) can be fitted to the base panel for table top applications
- Cases supplied fully assembled.

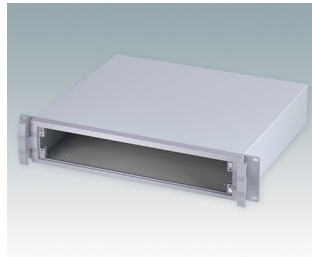
Order your own fully customised version [learn more here >>](#)



## Select Versions



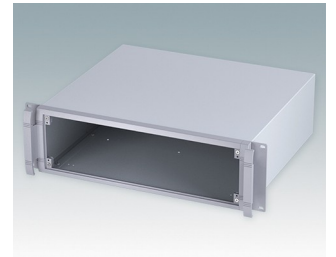
**M5619225**  
UNIMET 19" 2Ux280mm  
Aluminium  
Light grey/window grey RAL  
7035/7040  
88x482.6x280mm



**M5619235**  
UNIMET 19" 2Ux380mm  
Aluminium  
Light grey/window grey RAL  
7035/7040  
88x482.6x380mm

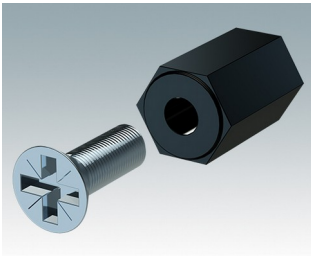


**M5619325**  
UNIMET 19" 3Ux280mm  
Aluminium  
Light grey/window grey RAL  
7035/7040  
132.5x482.6x280mm

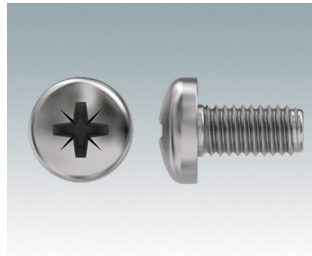


**M5619335**  
UNIMET 19" 3Ux380mm  
Aluminium  
Light grey/window grey RAL  
7035/7040  
132.5x482.6x380mm

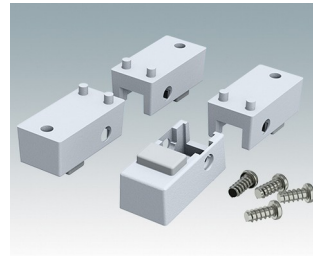
## Accessory



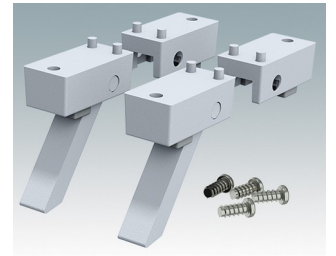
**M5600001**  
PCB mounting kit  
PA 6  
Black RAL 9005



**M5600010**  
PCB/Panel Fixing Screws, M3  
Steel  
Zinc coated  
6mm



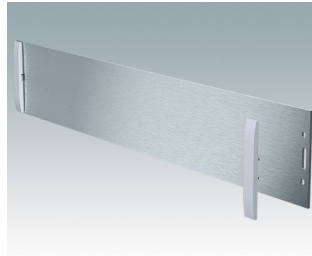
**M5600015**  
Case Feet Kit 1  
ABS (UL 94 HB)  
Light grey RAL 7035  
34x17x16mm



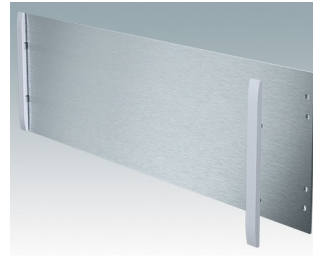
**M5600045**  
Case Feet Kit 2  
ABS (UL 94 HB)  
Light grey RAL 7035  
34x17x16mm



**M5900016**  
19" mounting kit  
Black RAL 9005



**M5900020**  
Front panel kit (2U)  
Aluminium  
Matt anodised  
392.5x2x67.1mm



**M5900030**  
Front panel kit (3U)  
Aluminium  
Matt anodised  
392.5x2x111mm



**M6000035**  
19" mounting kit  
Light grey RAL 7035

Subject to technical modification without notice. © OKW Enclosures Ltd