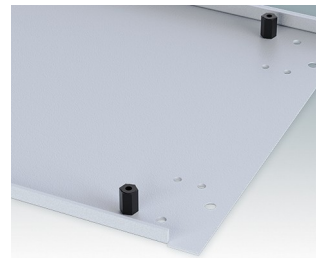
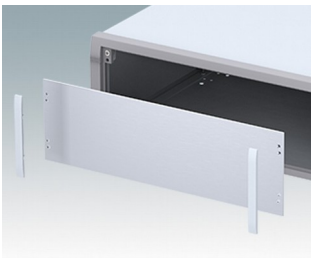
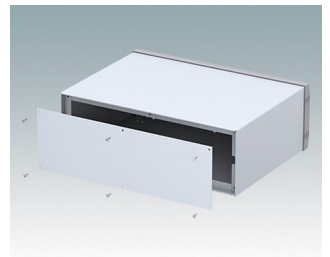
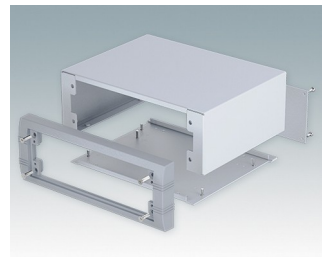


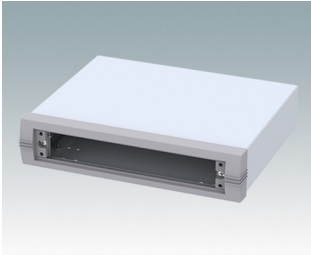
## Modern desktop and portable instrument enclosures

- Stylish, robust and versatile aluminium design in six standard sizes
- With or without a tilt/swivel carry handle bar
- Die cast front bezel is assembled to the folded aluminium case body
- Removable rear panel - recessed for protection of connectors, switches etc.
- Mounting holes in base for PCBs, chassis etc.
- Anodised aluminium front panels (accessory)
- Four non-slip rubber feet included
- Supplied pre-assembled
- Optional moulded ABS tilt feet (accessory).

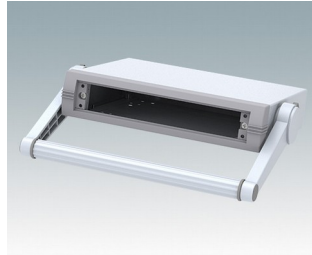
Order your own fully customised version [learn more here >>](#)



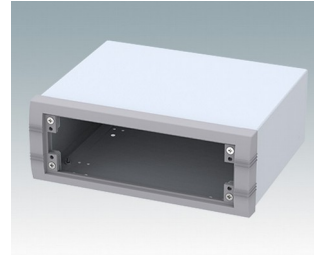
## Select Versions



**M5623005**  
UNIMET 1  
Aluminium  
Light grey/window grey RAL 7035/7040  
230x190x50mm



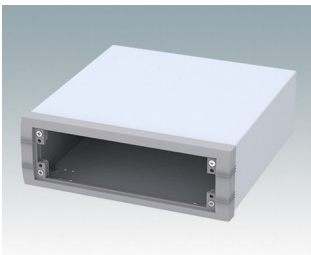
**M5623025**  
UNIMET 1H  
Aluminium  
Light grey/window grey RAL 7035/7040  
230x190x50mm



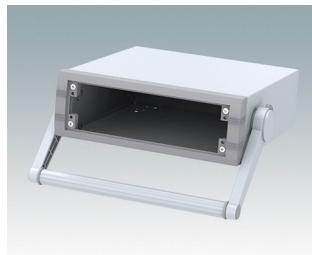
**M5623105**  
UNIMET 2  
Aluminium  
Light grey/window grey RAL 7035/7040  
230x190x85mm



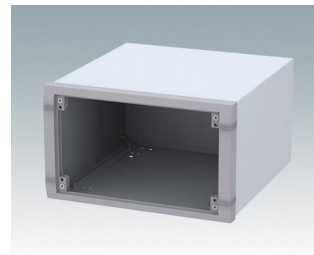
**M5623125**  
UNIMET 2H  
Aluminium  
Light grey/window grey RAL 7035/7040  
230x190x85mm



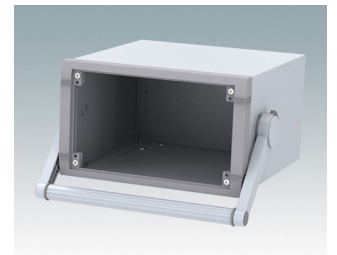
**M5625105**  
UNIMET 3  
Aluminium  
Light grey/window grey RAL 7035/7040  
250x260x85mm



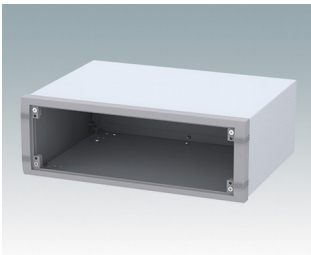
**M5625125**  
UNIMET 3H  
Aluminium  
Light grey/window grey RAL 7035/7040  
250x260x85mm



**M5625305**  
UNIMET 5  
Aluminium  
Light grey/window grey RAL 7035/7040  
250x260x150mm



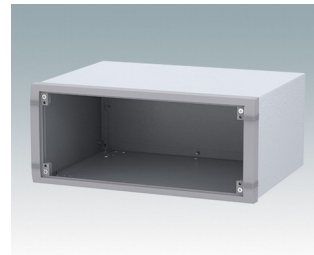
**M5625325**  
UNIMET 5H  
Aluminium  
Light grey/window grey RAL 7035/7040  
250x260x150mm



**M5635205**  
UNIMET 4  
Aluminium  
Light grey/window grey RAL 7035/7040  
350x260x120mm



**M5635225**  
UNIMET 4H  
Aluminium  
Light grey/window grey RAL 7035/7040  
350x260x120mm

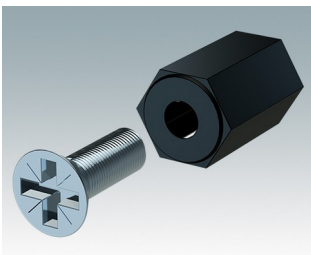


**M5635305**  
UNIMET 6  
Aluminium  
Light grey/window grey RAL 7035/7040  
350x260x150mm

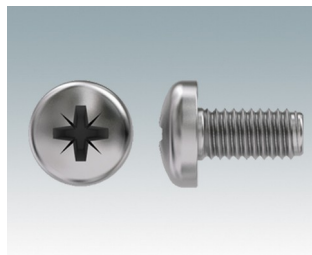


**M5635325**  
UNIMET 6H  
Aluminium  
Light grey/window grey RAL 7035/7040  
350x260x150mm

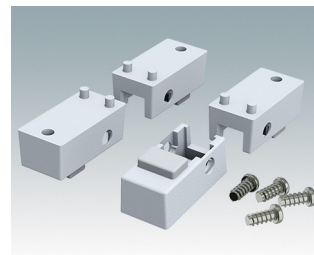
## Accessory



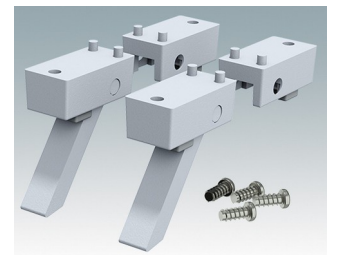
**M5600001**  
PCB mounting kit  
PA 6  
Black RAL 9005



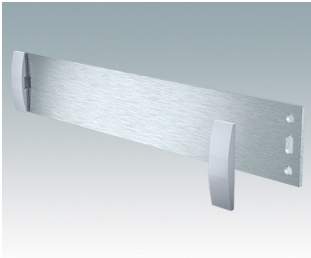
**M5600010**  
PCB/Panel Fixing Screws, M3  
Steel  
Zinc coated  
6mm



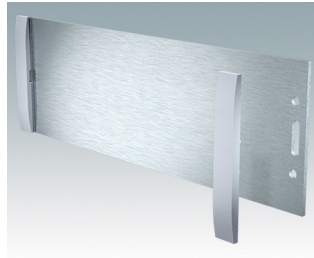
**M5600015**  
Case Feet Kit 1  
ABS (UL 94 HB)  
Light grey RAL 7035  
34x17x16mm



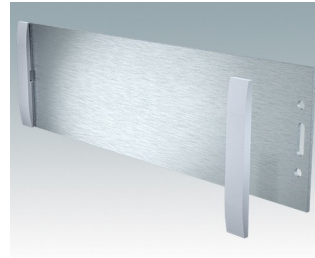
**M5600045**  
Case Feet Kit 2  
ABS (UL 94 HB)  
Light grey RAL 7035  
34x17x16mm



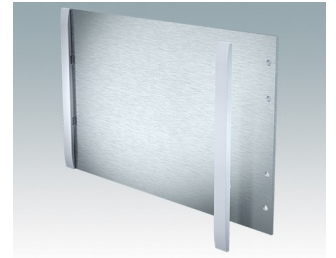
**M5700607**  
Front panel kit (1/1H)  
Aluminium  
Matt anodised  
199.5x2x33.6mm



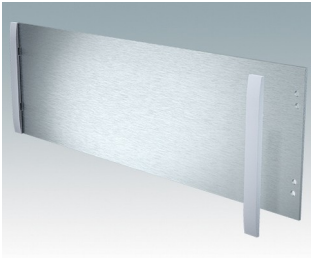
**M5700608**  
Front panel kit (2/2H)  
Aluminium  
Matt anodised  
199.5x2x65.1mm



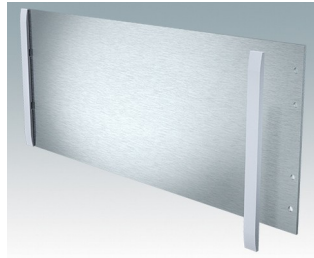
**M5700613**  
Front panel kit (3/3H)  
Aluminium  
Matt anodised  
219.5x2x65.1mm



**M5700616**  
Front panel kit (5/5H)  
Aluminium  
Matt anodised  
219.5x2x130.1mm



**M5700620**  
Front panel kit (4/4H)  
Aluminium  
Matt anodised  
319.5x2x100.1mm



**M5700621**  
Front panel kit (6/6H)  
Aluminium  
Matt anodised  
319.5x2x130.1mm

Subject to technical modification without notice. © OKW Enclosures Ltd