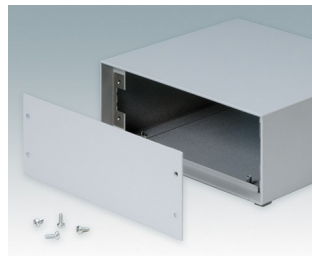
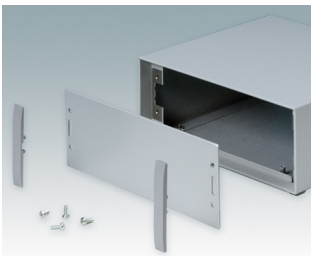
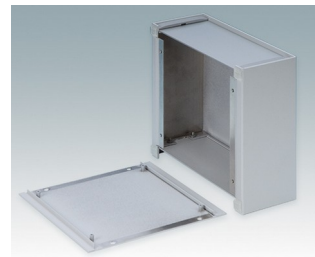
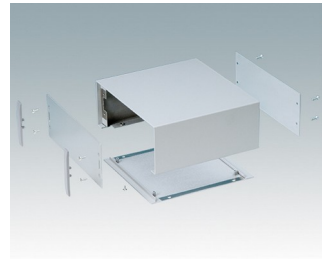
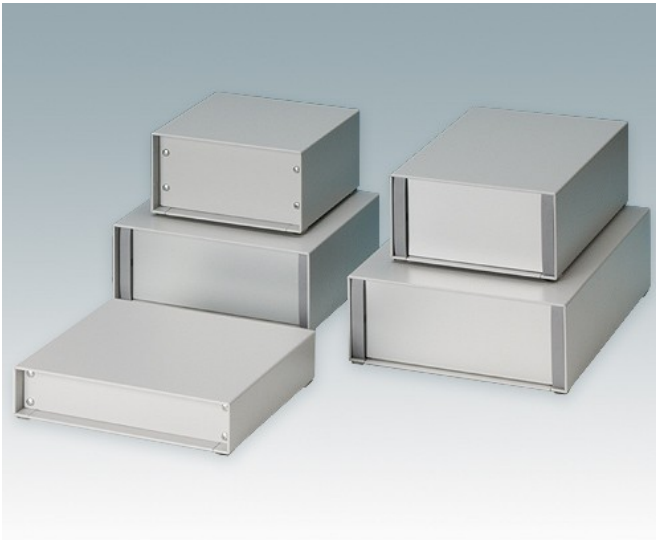


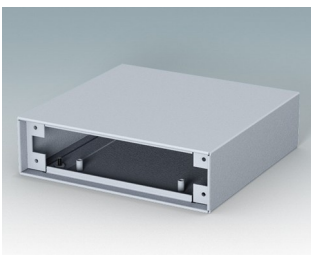
For small desktop and portable electronics

- Compact aluminium instrument enclosures in eight standard sizes
- Stylish, lightweight and versatile design, simple and fast assembly technique
- Removable base panel pre-fitted with four M3 PCB screw pillars
- Accessories: anodised front/rear panels and painted front/rear panels
- Front panels are recessed by 8 mm or 14 mm
- Four self-adhesive non-slip feet included.

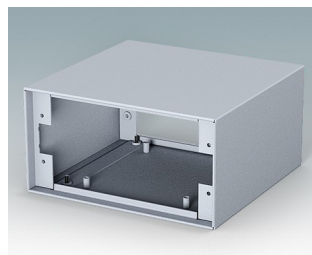
Order your own fully customised version [learn more here >>](#)



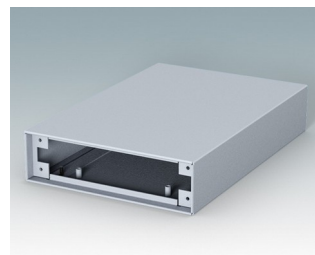
Select Versions



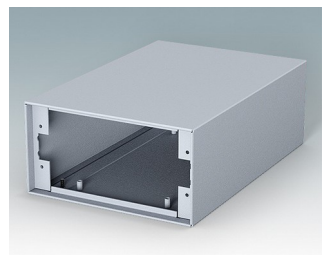
M5113115
MINIMET 1
Aluminium
Light grey RAL 7035
134.5x130x38.5mm



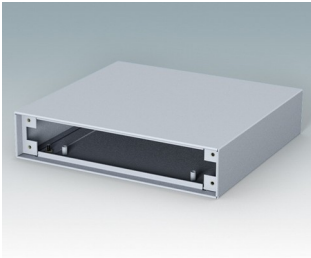
M5113125
MINIMET 2
Aluminium
Light grey RAL 7035
134.5x130x70mm



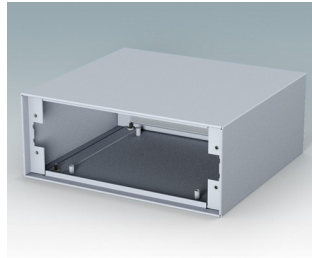
M5113215
MINIMET 3
Aluminium
Light grey RAL 7035
134.5x200x38.5mm



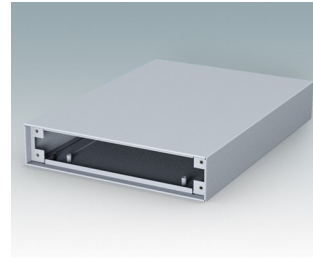
M5113225
MINIMET 4
Aluminium
Light grey RAL 7035
134.5x200x70mm



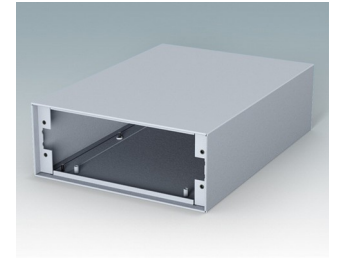
M5117115
MINIMET 5
Aluminium
Light grey RAL 7035
174.5x160x38.5mm



M5117125
MINIMET 6
Aluminium
Light grey RAL 7035
174.5x160x70mm

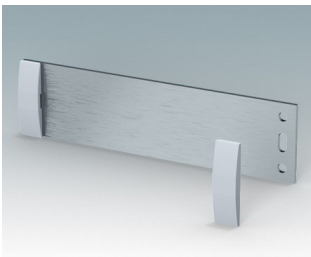


M5117215
MINIMET 7
Aluminium
Light grey RAL 7035
174.5x240x38.5mm

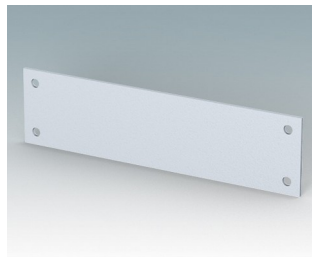


M5117225
MINIMET 8
Aluminium
Light grey RAL 7035
174.5x240x70mm

Accessory



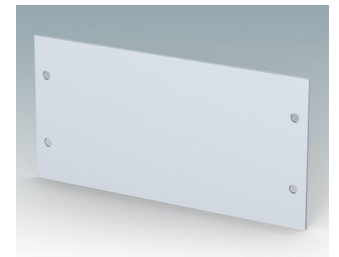
M5100510
Front/rear panel AN (size 1 & 3)
Aluminium
Matt anodised
129.5x2x33.6mm



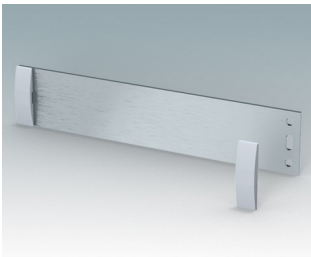
M5100515
Front/rear panel PN (size 1 & 3)
Aluminium
Light grey RAL 7035
129.5x1.5x33.6mm



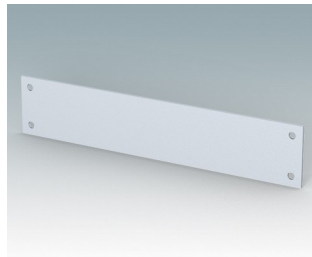
M5100520
Front/rear panel kit AN (size 2 & 4)
Aluminium
Matt anodised
129.5x2x65.1mm



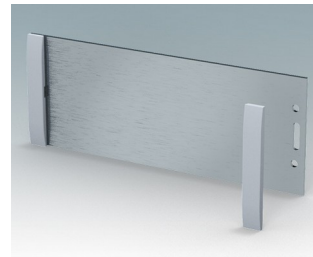
M5100525
Front/rear panel PN (size 2 & 4)
Aluminium
Light grey RAL 7035
129.5x1.5x65.1mm



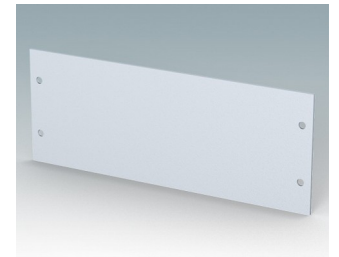
M5100550
Front/rear panel kit AN (size 5 & 7)
Aluminium
Matt anodised
169.5x2x33.6mm



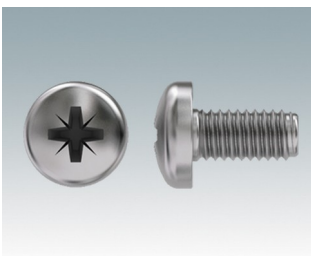
M5100555
Front/rear panel PN (size 5 & 7)
Aluminium
Light grey RAL 7035
169.5x1.5x33.6mm



M5100560
Front/rear panel kit AN (size 6 & 8)
Aluminium
Matt anodised
169.5x2x65.1mm



M5100565
Front/rear panel PN (size 6 & 8)
Aluminium
Light grey RAL 7035
169.5x1.5x65.1mm



M5600010
PCB/Panel Fixing Screws, M3
Steel
Zinc coated
6mm

Subject to technical modification without notice. © OKW Enclosures Ltd