

Fitting assembly fixings to front panels and enclosures

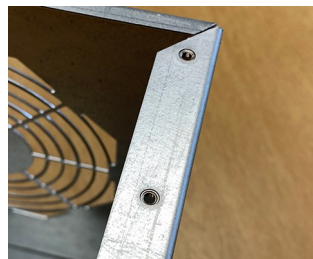
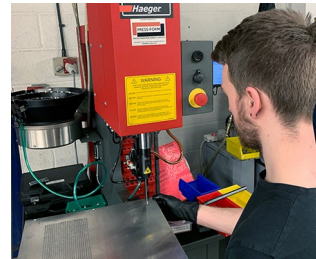
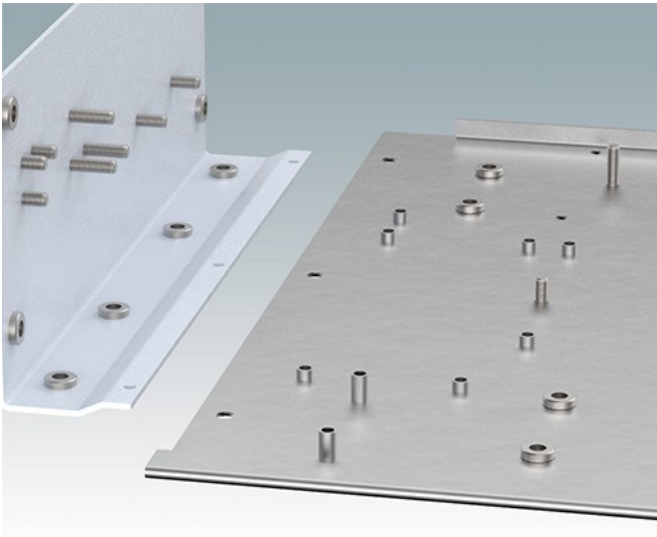
We can fit a wide selection of fixings including threaded inserts and studs on to aluminium and steel enclosure covers and panels. These can be used for mounting your PCBs, connectors, controls and electronic assemblies.

See below for a list of the standard fixings we use. Our engineers will be happy to suggest suitable inserts and fixings to suit your design requirements.

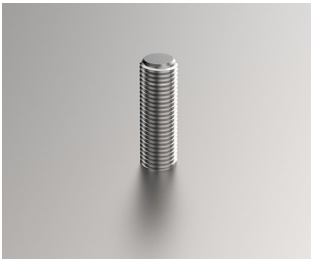
What we can fit:

- Metric fasteners (unified on request)
- Typically with M2, M2.5, M3, M4, M5 and M6 threads
- Self-clinch nuts, studs, blind standoffs, through standoffs
- PCB Clip-on Standoffs, 90 degree panel nuts, cable tie mounts.
- Earth studs on to aluminium panels and earth tags on to steel panels
- Concealed head threaded studs to avoid any witness on the external surface of the panel.
- As an alternative to inserts, we can also create a burst hole in the sheet material and tap the required thread

Contact our sales team for more information and a quotation.



Select Versions



M0000700
Flush Head Fixing Studs
Steel



M0000701
Through Standoffs
Steel



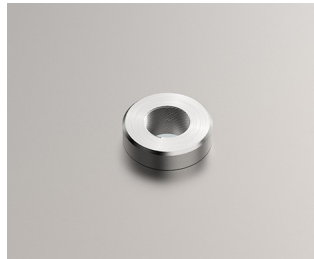
M0000702
Blind Standoffs
Steel



M0000703
Concealed Head Standoffs
Steel



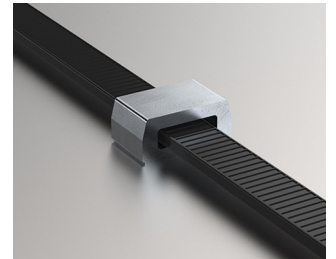
M0000704
PCB Standoffs
Steel



M0000720
Self-Clinch Nuts
Steel



M0000721
Right Angle Panel Nuts
Steel



M0000730
Cable Tie Mounts
Steel

Subject to technical modification without notice. © OKW Enclosures Ltd