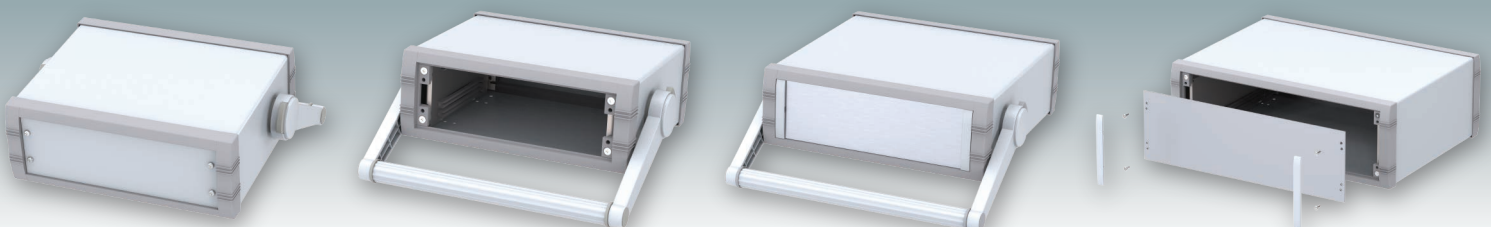
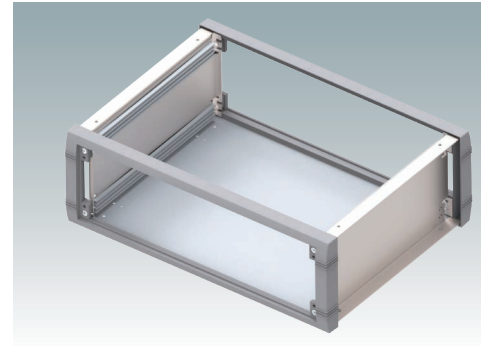
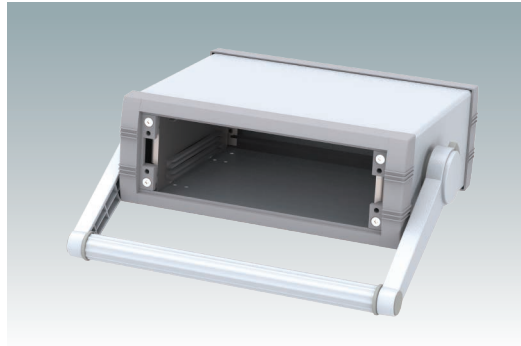
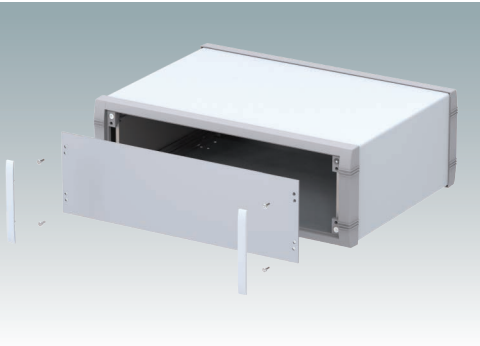
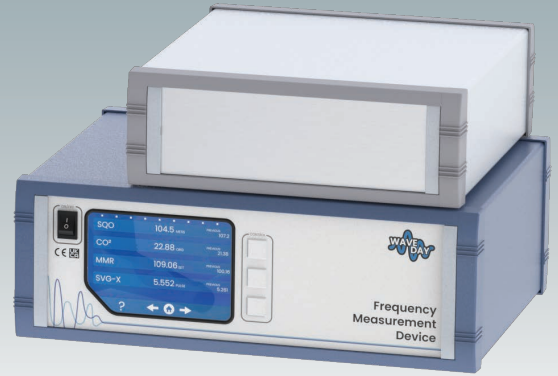


## UNIMET-PLUS

Desktop/Portable  
Instrument Enclosures



# UNIMET-PLUS

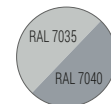


## Desktop/Portable Instrument Enclosures

Stylish and versatile instrument enclosures in aluminium. Robust and versatile design in six sizes. With or without a tilt/swivel carry handle. Internal chassis with horizontal guide positions for slide-in PCBs. Four snap-in polyamide PCB guides included. Stylish diecast front and rear bezels assembled to the fabricated aluminium case body. Removable rear panel. Four non-slip rubber feet included. Order your own fully customised version.

## Standard colours

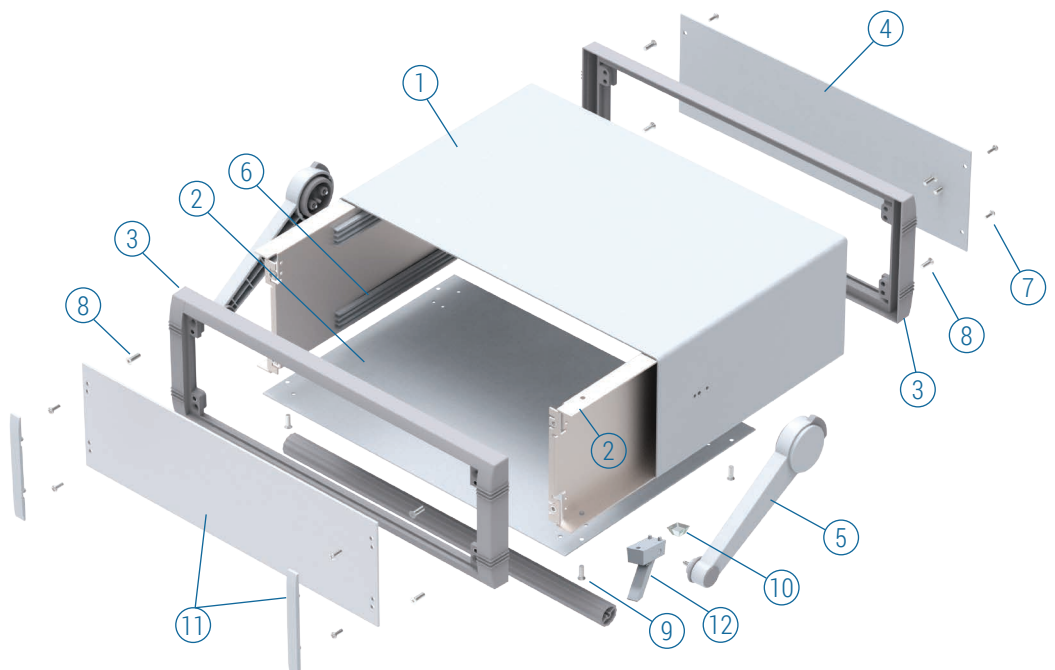
Light grey RAL 7035.  
Window grey RAL 7040.



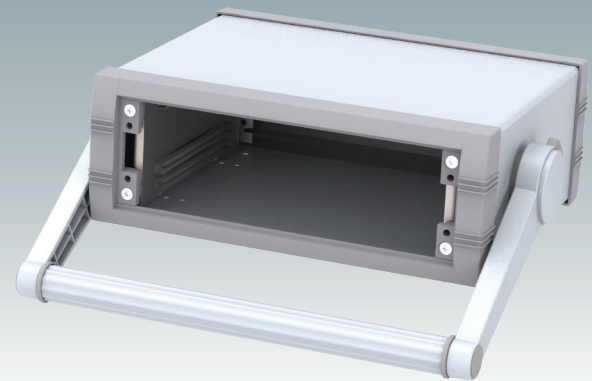
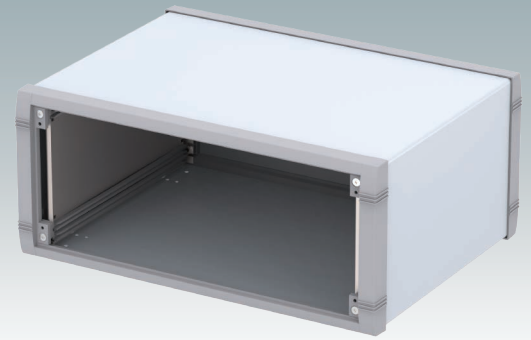
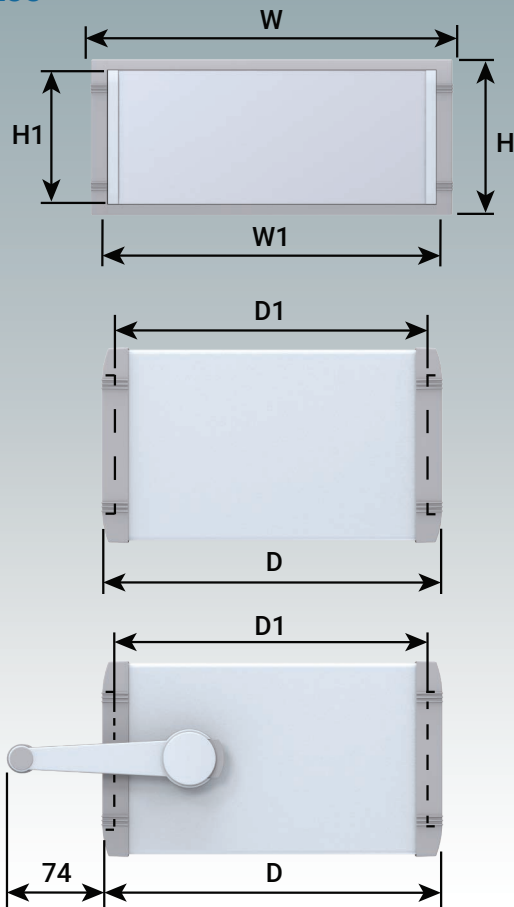
## Supply

- ① Top cover
- ② Base/chassis
- ③ Front bezel (x2)
- ④ Rear panel
- ⑤ Carry handle
- ⑥ PCB guides (x4)
- ⑦ M3 x 10 mm (x8)
- ⑧ M4 x 16 mm (x4/8)
- ⑨ M3 x 6 mm (x4)
- ⑩ Rubber foot (x4)
- ⑪ \*Front panel kit
- ⑫ \*ABS feet

\*accessories



## UNIMET-PLUS



VERSION H

## WITHOUT CARRY HANDLE

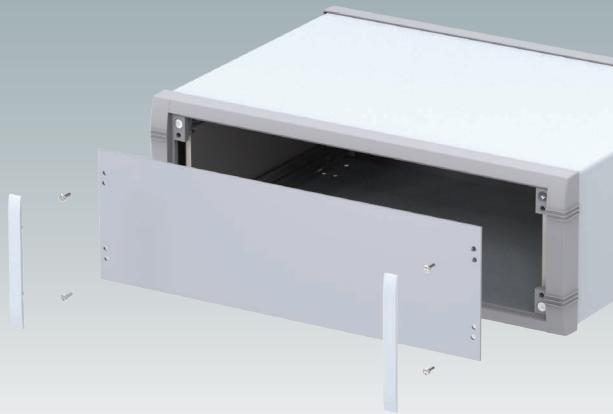
Part No.	Version	H	W	D	D1	W1 Front Panel	H1 Front Panel	PCB Width (max.)	PCB Depth (max.)	PCB Thickness
<b>M 56 23 015</b>	1	50	230	193	181.6	199.5	33.6	184	181.5	1.6
<b>M 56 23 115</b>	2	85	230	193	181.6	199.5	65.1	184	181.5	1.6
<b>M 56 25 115</b>	3	85	250	263	251.6	219.5	65.1	204	251.5	1.6
<b>M 56 35 215</b>	4	120	350	263	251.6	319.5	100.1	304	251.5	1.6
<b>M 56 25 315</b>	5	150	250	263	251.6	219.5	130.1	204	251.5	1.6
<b>M 56 35 315</b>	6	150	350	263	251.6	319.5	130.1	304	251.5	1.6

## WITH CARRY HANDLE

Part No.	Version	H	W	D	D1	W1 Front Panel	H1 Front Panel	PCB Width (max.)	PCB Depth (max.)	PCB Thickness
<b>M 56 23 035</b>	1H	50	230	193	181.6	199.5	33.6	184	181.5	1.6
<b>M 56 23 135</b>	2H	85	230	193	181.6	199.5	65.1	184	181.5	1.6
<b>M 56 25 135</b>	3H	85	250	263	251.6	219.5	65.1	204	251.5	1.6
<b>M 56 35 235</b>	4H	120	350	263	251.6	319.5	100.1	304	251.5	1.6
<b>M 56 25 335</b>	5H	150	250	263	251.6	219.5	130.1	204	251.5	1.6
<b>M 56 35 335</b>	6H	150	350	263	251.6	319.5	130.1	304	251.5	1.6

For full 2D drawings and 3D models please see our website.

For front panels and accessories see page 4.



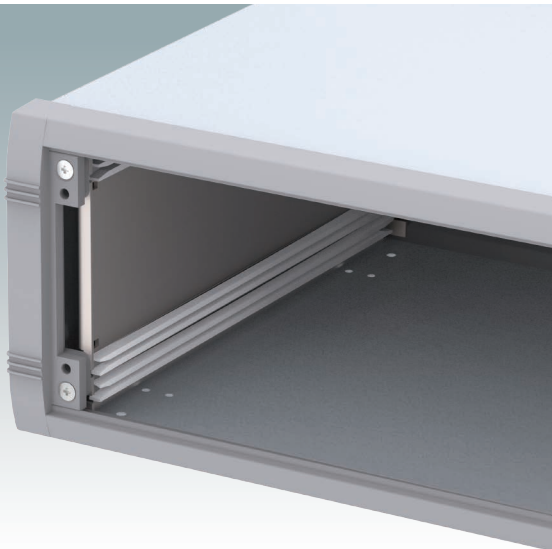
## Front Panel Kits

### Supply:

Panel (2 mm matt anodised aluminium)  
2 Trims (ABS, RAL 7035)

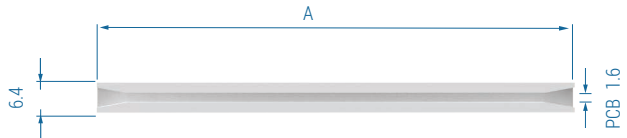


Part No.	Version	A	B
M 57 00 607	1/1H	33.6	199.5
M 57 00 608	2/2H	65.1	199.5
M 57 00 613	3/3H	65.1	219.5
M 57 00 620	4/4H	100.1	319.5
M 57 00 616	5/5H	130.1	219.5
M 57 00 621	6/6H	130.1	319.5

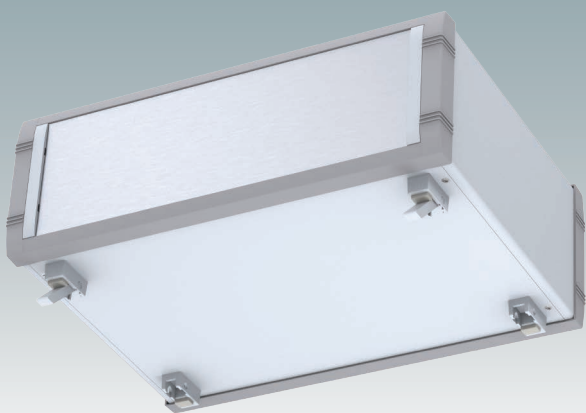


## PCB Guides

Four PCB guides are supplied with each case as standard.  
You can order additional guides here.



Part No.	A	Version
M 57 00 203	102	1/1H/2/2H
M 57 00 202	216	3/3H/4/4H/5/5H/6/6H

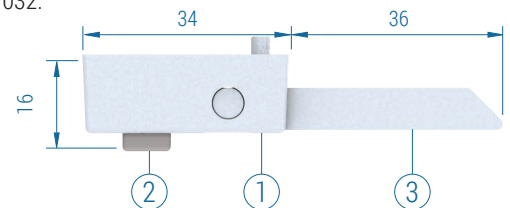


## Feet Kits

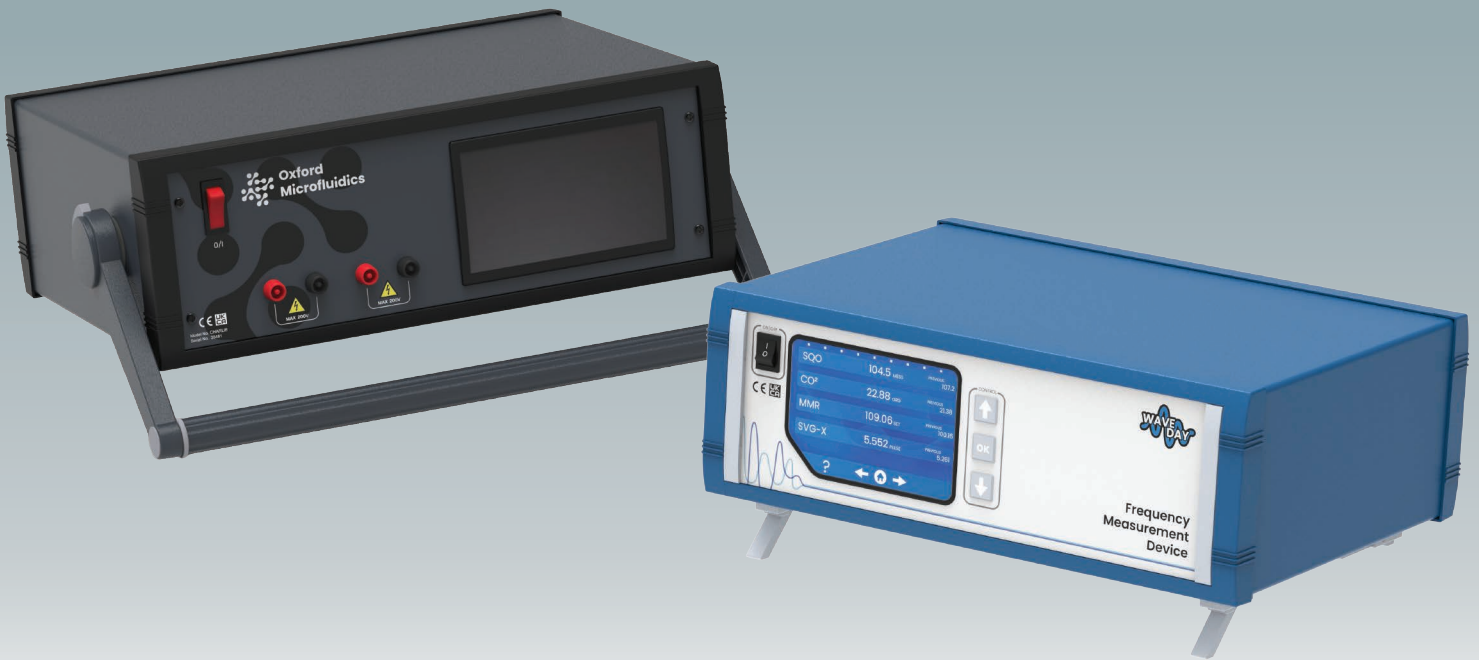
Optional moulded feet which replace the four standard rubber feet supplied with the enclosures. They are assembled to pre-punched holes in the UNIMET-PLUS base panels with self-tapping screws (included).

### Material:

Feet and legs: ABS, light grey RAL 7035.  
Non-slip pads: TPE, pebble grey RAL 7032.



Part No.	Version	Supply
M 56 00 015	Without tilt legs	①+② x 4
M 56 00 045	With tilt legs	①+② x 4 + ③ x 2



## Order your own customised version

We can supply the UNIMET-PLUS enclosures fully customised to your individual technical specifications.

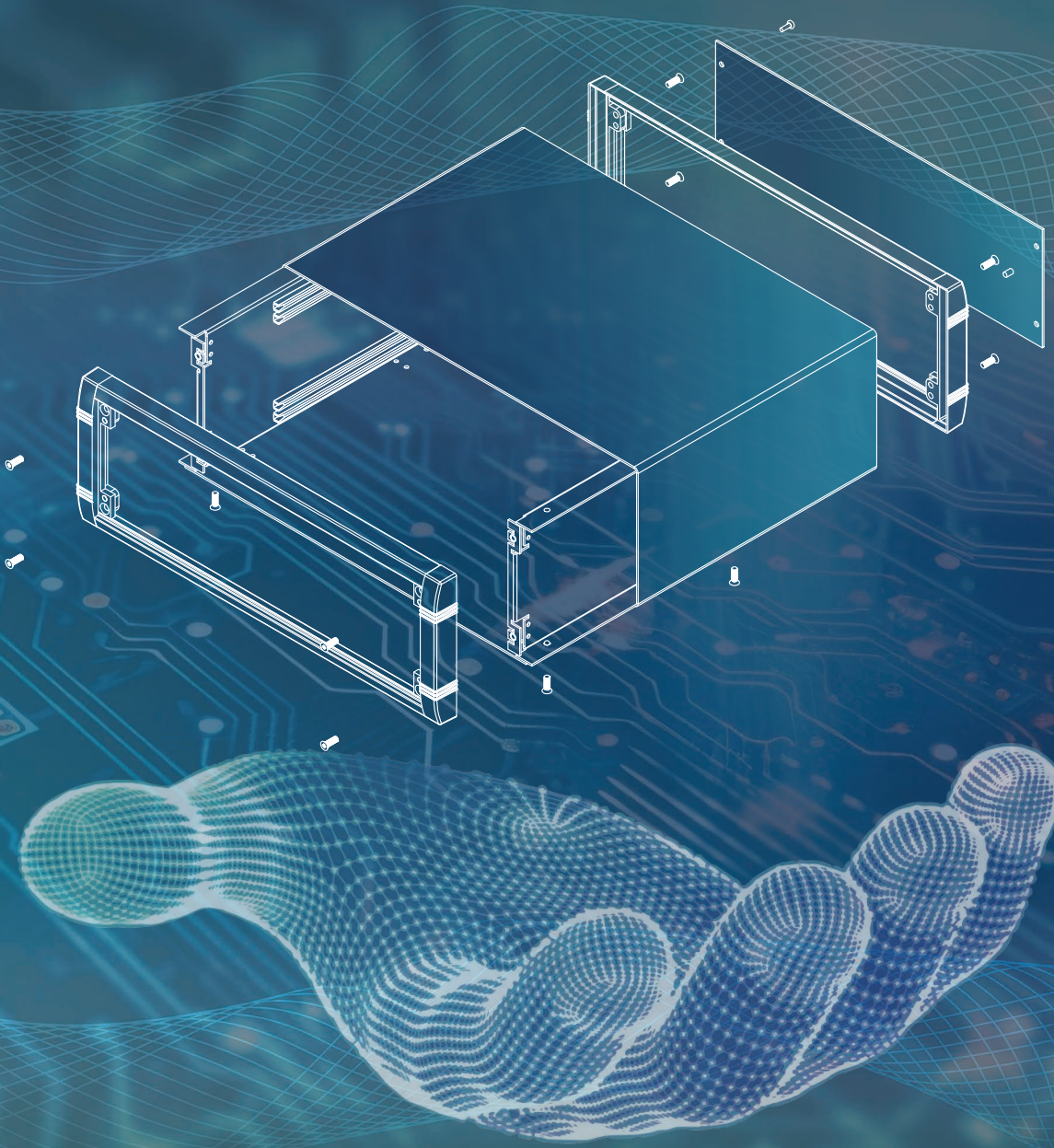
All external dimensions – height, width and depth – can be modified to ensure your PCB assemblies and equipment will fit exactly.

The enclosures and front panels can be machined with holes and cutouts for fitting displays, keypads, HMI touch panels, control buttons and connections.

Other services include adding inserts and screw bosses; custom colours and finishes; digital and silk-screen printing, and engraving.

Having a flexible manufacturing system allows us to offer competitive prices even for small quantities. Do not hesitate to ask us for a quotation.

Our sales team will be very happy to discuss your requirements and help you specify your UNIMET-PLUS enclosures exactly as you need them.



# METcase™

## MANUFACTURER

Metcase Enclosures  
 A division of:  
 OKW Enclosures Ltd.  
 15 Brunel Way  
 Segensworth East  
 Fareham, Hampshire  
 PO15 5TX  
 United Kingdom

Telephone: +44 (0) 1489 583858  
 Email: sales@metcase.co.uk  
 Website: www.metcase.co.uk

© OKW Enclosures Ltd. All rights reserved  
 Catalogue Edition 1.1 – January 2025.  
 This catalogue will be valid until 31/12/2027.  
 Subject to technical modifications without notice.  
 Typographical and other errors do not justify any  
 claim for damages.  
 Digital Version: 01/2025e

## Presented by:

Find your local sales partner here:



**UNITED KINGDOM | IRELAND**  
 OKW ENCLOSURES LTD  
 15 Brunel Way,  
 Segensworth East,  
 Fareham, PO15 5TX  
 United Kingdom  
 Phone: +44 (0) 1489 583858  
 Email: sales@metcase.co.uk  
 Website: www.metcase.co.uk



**AUSTRALIA | NEW ZEALAND**  
 ROLEC OKW Australia New Zealand PTY LTD  
 Unit 6/29 Coombes Drive, Penrith NSW 2750  
 Phone: +61 2 4722 3388  
 Email: metcase@rolec-okw.com.au  
 Website: www.metcase.com.au



**BELGIUM | LUXEMBOURG**  
 Telerex N.V.  
 Uilenbaan 90 Unit 8, 2160 Wommelgem  
 Tel: +32 (0)3 3 26 40 00  
 Email: info@telerex-europe.com  
 Website: www.metcase.co.uk



**BRAZIL**  
 sob Schurter + OKW do Brasil  
 Componentes Eletrônicos Ltda.  
 Rua Barão do Triunfo,  
 88 - Sala 606 Brooklin,  
 São Paulo/SP CEP 04602-000  
 Phone: +55 (11) 50 90 00 30  
 Email: info@sob-brasil.com  
 Website: www.metcase.co.uk



**ISRAEL**  
 P. Weiss  
 20 Ha-Ta'as st.  
 P.O.B. 50 Kfar-Saba, 4442520.  
 Phone +972 9 7677500  
 Email: pweiss@pweiss.co.il  
 Website: www.metcase.co.uk



**ITALY**  
 Alhof di A. Hofmann SPA  
 Via Melegnano 20,  
 20019 Settimo Milanese MI  
 Phone: (02) 28 50 08 1  
 Email: alhof@alhof.com  
 Website: www.metcase.co.uk



**NETHERLANDS**  
 Telerex Nederland B.V.  
 Postbus 6852, 4802 HW Breda  
 Tel: +31 (0)76 5 78 20 00  
 Email: info@telerex-europe.com  
 Website: www.metcase.co.uk

www.metcase.co.uk